

J&R TECHNOLOGY LIMITED

Add: F#3, Build#1, BWN Industrial Park, Fuyong Town,
Bao'an District, Shenzhen, China

Tel: +86-755-27322952

Fax: +86-755-27322197

Email: sales@jr-ltd.com

Web: www.jr-ltd.com



Choose J&R
Choose reliable talks!

CONTENTS

COMPANY PROFILE

About us	01-02
Certification	03
Application areas	04

Products

JR100	05-26
JR200	27-36
JR300	37-48
Telephone booth	49-52

Management system

PABX	53-54
------	-------

Telephone Accessories

Accessories	55-56
-------------	-------

Cooperation partner

Cooperation	57-58
-------------	-------

TEAM BUILDING ▼



Efficient Management Team

Strict management system and innovative concept are the bases of our sustainable development.



Rich Industrial Experience

Core leadership has more than a decade of experience in the industry. It has been successfully in operate for hundreds of projects.



Professional R & D Capabilities

Professional R & D engineers research and develop products which have bright market prospects and can meet customer's demands, providing customers with high-quality customized solutions.



Quality Supply Chain Management

Quality supply chain management makes sure product quality and the maximum limit of the control of raw material cost and delivery time well according to customer needs.



Strict Quality Inspection

Rigorous testing links and advanced test equipment guarantee our high quality.



Excellent Team

We have an excellent team who provide efficient service and quality products.



COMPANY PROFILE ▼



J&R is China based design and manufacturer of rugged communications equipment. Our telephones and systems work, and last in environments where regular products wouldn't. All of our telephone models available for Analogue, IP/SIP, GSM/3G version. Dedication and profession have been our pursuing goal during any procedures of our production, not only in developing and quality controlling, but also in marketing and after sales. We serve any single potential customer with special individual solutions and systems.

Mission

J&R designs and manufactures innovative technologies that enable clear and effective communication between people, organizations and systems. When time and response really matter because lives are on the line, J&R'S organically engineered scalable systems enable responders to react intelligently, with confidence and ease.

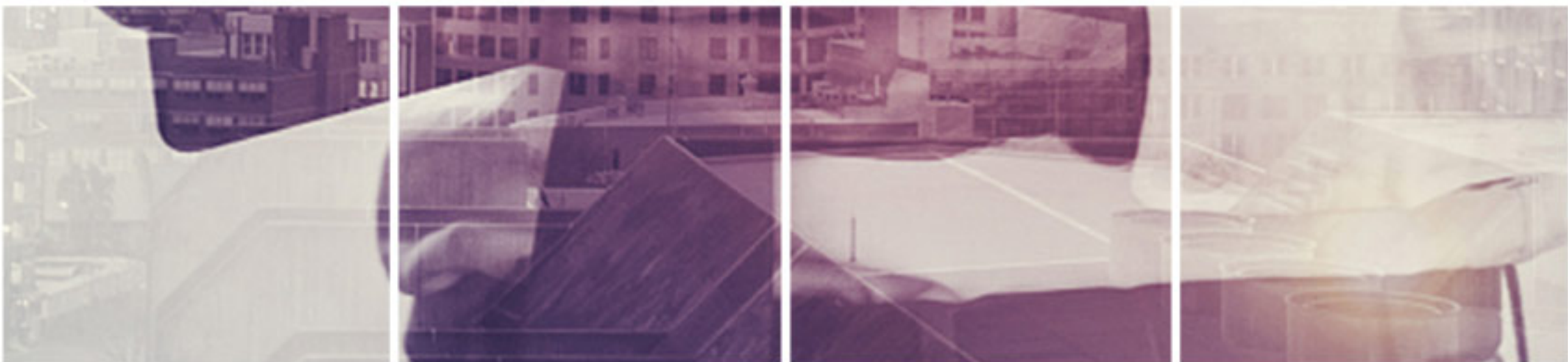
Vision

J&R strives to be the world's most comprehensive, collaborative, and trusted provider of innovative communication products and system solutions.

Value

J&R members value integrity, transparency and collaboration regarding their personal and business dealings. We share our knowledge and information openly, honestly and appropriately for the purpose of understanding and serving our customers, growing our business profitably, and properly assessing and rewarding all stakeholder contributions to the team's success. We look to share our success with our community and those in need.

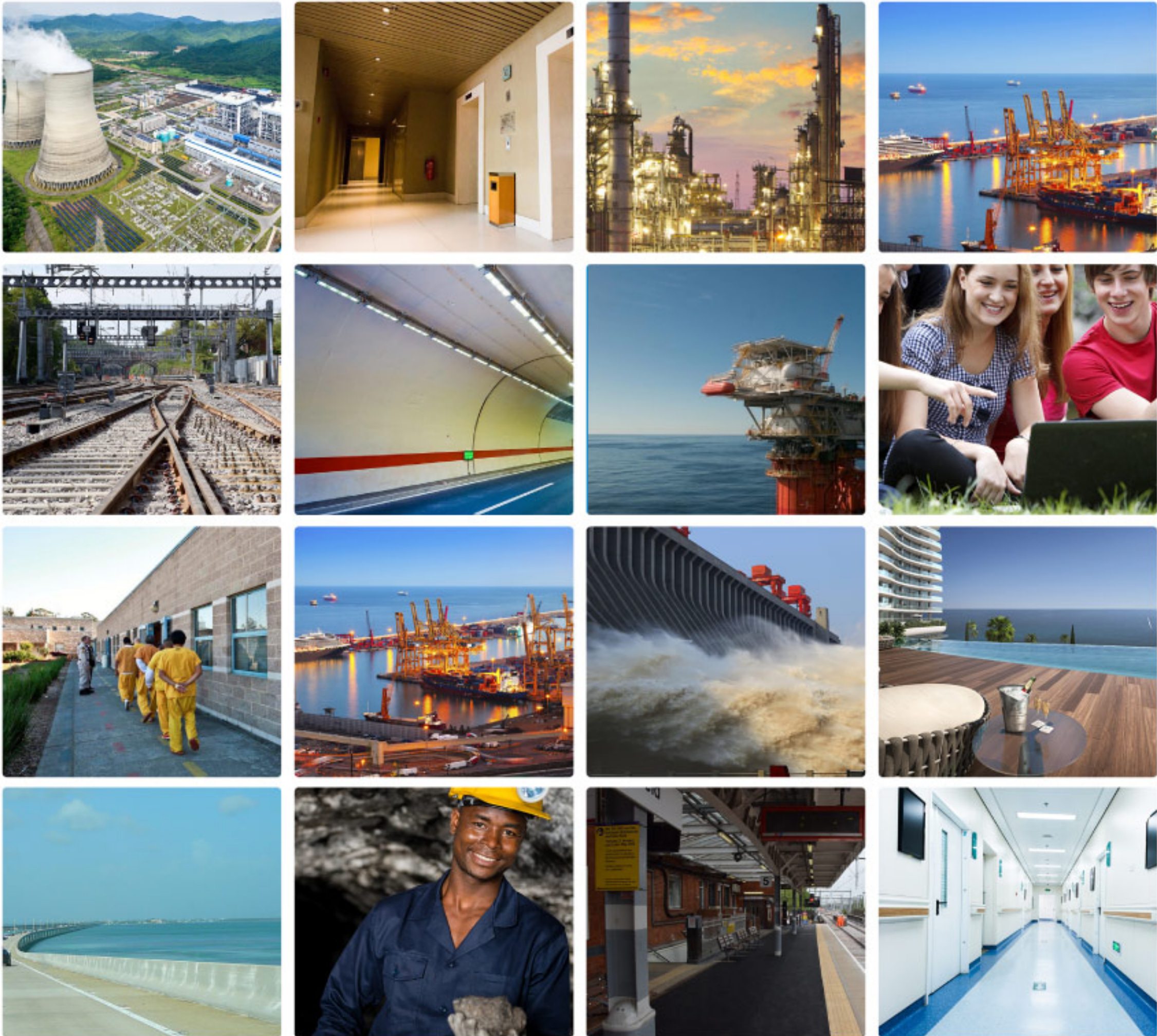
Choose J&R technology, choose reliable talks!



CERTIFICATION ▼



APPLICATION AREAS ▼





JR100

Weatherproof Telephones

The JR100 series telephones are fully contained within a corrosion resistant cast aluminium weatherproof case with a door providing complete protection against dust and moisture ingress, resulting in a highly reliable product with a long MTBF.

The unique robust handset is manufactured from moulded Bulk Molding Compound and designed specifically to withstand arduous use in all environments, armoured cord to provide additional resistance to vandalism or heavy industrial use.

The JR100 Series Weatherproof Telephones are designed for use by the railways, power stations, the armed services and heavy industry which require very reliable telephony under adverse conditions.



SIP
The world's unified converged communications standard protocol eliminates the need for compatibility and supplier selection.



Advanced protection classes:
strict compliance with high standards of international protection, waterproof to IP67, anti-impact to IK10



HD voice quality:
Wide band voice code G.722, making perfect acoustic enjoyment.



Full duplex speakerphone:
Latest Echo Cancel algorithm and professional echo cancellation Technology



Tamper resistant:
The front panel is matched with 304 stainless steel security screw.



Vandal resistant:
Robust enclosure to prevent malicious damage



PoE:
No need to connect external power supply, reducing wiring trouble



Operating Temperatures:
-40°C to +70°C, easy to adapt to the harsh environment

Industrial Telephones JR101-FK-HB



FEATURES

- Enclosed Telephone with protection door against harm and dirt
- Supported Standard Analog, IP/VoIP, GSM, 3G version
- Housed in a weatherproof cast aluminium enclosure, weather resistant
- With horn and beacon, loudness of sound can be 110~120 DB, Suitable for very noise environment.
- Operating temperature -40°C to +70°C
- Full keypad for free dial or speed dial.
- Very easy for operation, maintenance and management
- Telephone line powered/POE/DC powered based on different version
- Spiral or steel armoured handset cord
- Dimensions in mm: H 339 / W 246 / D 126 (mm)



The Industrial Telephone stands for : Telephony under rough environmental conditions with the highest degree of safety in industrial areas.

It is fully contained within a corrosion resistant & impact-resistant cast aluminium weatherproof case with a door providing complete protection against dust and moisture ingress, resulting in a highly reliable product with a long MTBF.

Ideal for Metro, Railway, Marine, Mining, Tunnels, Steel Plant, Chemical plant, Power plant and related industrial application, etc.



JR101-FK Weatherproof Telephone is designed for voice communication in the hostile environment where reliability, efficiency and safety are of prime importance.

As a weatherproof telephone, it is fully contained within a corrosion resistant cast aluminium weatherproof case with a door providing complete protection against dust and moisture ingress, resulting in a highly reliable product with a long MTBF.

The phone is suitable for use in harsh environment characterized by: indoor & outdoor, Presence of dust & water ingress, Corrosive atmosphere, varying temperature, loud ambient noise, safety ect.

MAIN FEATURES:

- Housed in a weatherproof cast aluminium enclosure,weather resistant
- Supported Standard Analog, IP/VoIP, GSM, 3G version
- Compatible with all PBX'S
- Fully encapsulated electronics provide unparalleled resistance to chemicals and moisture in harsh environments
- SIP or H323 protocols,Fully configurable through any internet browser or the on-board display
- Completely programmable weatherproof keypad designed to be used with gloves
- No.of keys(TOTAL 15KEYS):0-9, *, #, Flash, Mute, Last Number Redial
- Very easy for operation,maintenance and management
- Telephone line powered/POE/DC powered based on different version
- Spiral or steel armoured handset cord with 20 years life span
- Captive cover screws prevent loss during installation
- Call tone approx.90 dB(A)
- CE, (EMC, LVD) , FCC, RoHS compliant
- Operating temperature -40°C to +70°C
- Available in additional color options:Yellow,Blue,Red,Gray (RAL code)
- Mounting :Wall/column/structural
- Dimensions in mm: H 339 / W 246 / D 126 (mm)



JR101-CB-L

MAIN FEATURES:

- Enclosed Telephone with protection door against harm and dirt
- Compatible with all PBX'S
- With a external LED flashing light mounted on the phone top
- Fully encapsulated electronics provide unparalleled resistance to chemicals and moisture in harsh environments
- SIP or H323 protocols, Fully configurable through any internet browser or the on-board display
- Hotline Telephone(Automatic Dialer and No-Dial)without keypad
- Spiral or steel armoured cord handset with 20 years life span
- Captive cover screws prevent loss during installation
- Call tone approx.90 dB(A)
- Operating temperature -40°C to +70°C
- Mounting : Wall/column/structural
- CE, FCC, RoHS compliant
- Dimensions in mm: H 370 / W 246 / D 126 (mm)

JR101-CB-L Weatherproof Telephone is designed for voice communication in the hostile environment where reliability, efficiency and safety are of prime importance.

As a weatherproof telephone, it is fully contained within a corrosion resistant cast aluminium weatherproof case with a door providing complete protection against dust and moisture ingress, resulting in a highly reliable product with a long MTBF.

The phone is suitable for use in harsh environment characterized by: indoor & outdoor, Presence of dust & water ingress, Corrosive atmosphere, varying temperature, loud ambient noise, safety ect.



JR101-FK-L Mining Telephone

The Telephone is designed for voice communication in the hostile environment where reliability, efficiency and safety are of prime importance.

As a Mining telephone, it is fully contained within a corrosion resistant cast aluminium weatherproof case with a door providing complete protection against dust and moisture ingress, resulting in a highly reliable product with a long MTBF.

The phone is suitable for use in harsh environment characterized by: indoor & outdoor, Presence of dust & water ingress. Corrosive atmosphere, varying temperature, loud ambient noise, safety ect.

MAIN FEATURES:

- Housed in a weatherproof cast aluminium enclosure, weather resistant
- Supported Standard Landline, IP/VoIP version, Compatible with all PBX'S
- Fully encapsulated electronics provide unparalleled resistance to chemicals and moisture in harsh environments
- With a external LED flashing light fixed on the phone top. No required extra power source
- SIP or H323 protocols. Fully configurable through any internet browser or the on-board display
- Completely programmable weatherproof keypad designed to be used with gloves
- No.of keys(TOTAL 15KEYS) :0-9, *, #, Flash, Mute, Last Number Redial
- Very easy for operation, maintenance and management
- Telephone line powered/POE/DC powered based on different version
- Spiral or steel armoured handset cord with 20 years life span
- Adjustable handset holding clips secure the phone in marine applications and areas of high vibration
- Captive cover screws prevent loss during installation
- Call tone approx.90 dB(A)
- CE, (EMC, LVD), FCC, RoHS compliant
- Operating temperature -40°C to +70°C
- Application: underground mine (IP67)
- Dimensions in mm: H 370 / W 246 / D 126 (mm)



JR103-FK Weather Resistant Telephone



MAIN FEATURES:

- Housed in a weatherproof cast aluminium enclosure, weather resistant
- Supported Standard Analog, IP/VoIP, GSM, 3G version
- Compatible with all PBX'S
- Fully encapsulated electronics provide unparalleled resistance to chemicals and moisture in harsh environments
- SIP or H323 protocols, Fully configurable through any internet browser or the on-board display
- Line powered/POE/DC powered based on different version
- Completely programmable weatherproof keypad designed to be used with gloves
- No. of keys(TOTAL 15KEYS): 0-9, *, #, Flash, Mute, Last Number Redial
- Available in additional color options: Yellow, Blue, Red, Gray (RAL code)
- Very easy for operation, maintenance and management
- Non-movable, magnetically operated hook switch
- Spiral or steel armoured handset cord with 20 years life span
- Adjustable handset holding clips secure the phone in marine applications and areas of high vibration
- Captive cover screws prevent loss during installation
- Call tone approx.90 dB(A)
- CE, (EMC, LVD), FCC, RoHS compliant
- Operating temperature -40°C to +70°C
- Dimensions in mm: H 334 / W 204 / D 109 (mm)

JR103-FK Weather Resistant Telephone is designed for voice communication in the hostile environment where reliability, efficiency and safety are of prime importance.

As a Weather Resistant Telephone, it is fully contained within a corrosion resistant cast aluminium weatherproof case to providing complete protection against dust and moisture ingress, resulting in a highly reliable product with a long MTBF.

The phone is suitable for use in harsh environment characterized by: indoor & outdoor, Presence of dust & water ingress, Corrosive atmosphere, varying temperature, loud ambient noise, safety ect.

JR103-CB Marine Telephone



MAIN FEATURES:

- Housed in a weatherproof cast aluminium enclosure, weather resistant
- Supported Standard Analog, IP/VoIP, GSM, 3G version
- Compatible with all PBX'S
- Fully encapsulated electronics provide unparalleled resistance to chemicals and moisture in harsh environments
- SIP or H323 protocols, Fully configurable through any internet browser or the on-board display
- Line powered/POE/DC powered based on different version
- Hotline Telephone(Automatic Dialers and No-Dial)without keypad
- Available in additional color options:Yellow, Blue, Red, Gray (RAL code)
- Very easy for operation, maintenance and management
- Magnetic reed hook switch to reduce parts subject to wear
- Spiral or steel armoured handset cord with 20 years life span
- Adjustable handset holding clips secure the phone in marine applications and areas of high vibration
- Captive cover screws prevent loss during installation
- Call tone approx.90 dB(A)
- CE, (EMC, LVD), FCC, RoHS compliant
- Operating temperature -40°C to +70°C
- Dimensions in mm: W 334 / H 204 / D 109 (mm)

JR103-CB Marine Telephone is designed for voice communication in the hostile environment where reliability, efficiency and safety are of prime importance.

As a Marine Telephone, it is fully contained within a corrosion resistant cast aluminium weatherproof case to providing complete protection against dust and moisture ingress, resulting in a highly reliable product with a long MTBF.

The phone is suitable for use in harsh environment characterized by: indoor & outdoor, Presence of dust & water ingress, Corrosive atmosphere, varying temperature, loud ambient noise, safety ect.

JR101-FK Railway Trackside Telephone



JR101-FK Trackside Telephone is designed for voice communication in the hostile environment where reliability, efficiency and safety are of prime importance.

As a Trackside telephone, it is fully contained within a corrosion resistant cast aluminium weatherproof case with a door providing complete protection against dust and moisture ingress, resulting in a highly reliable product with a long MTBF.

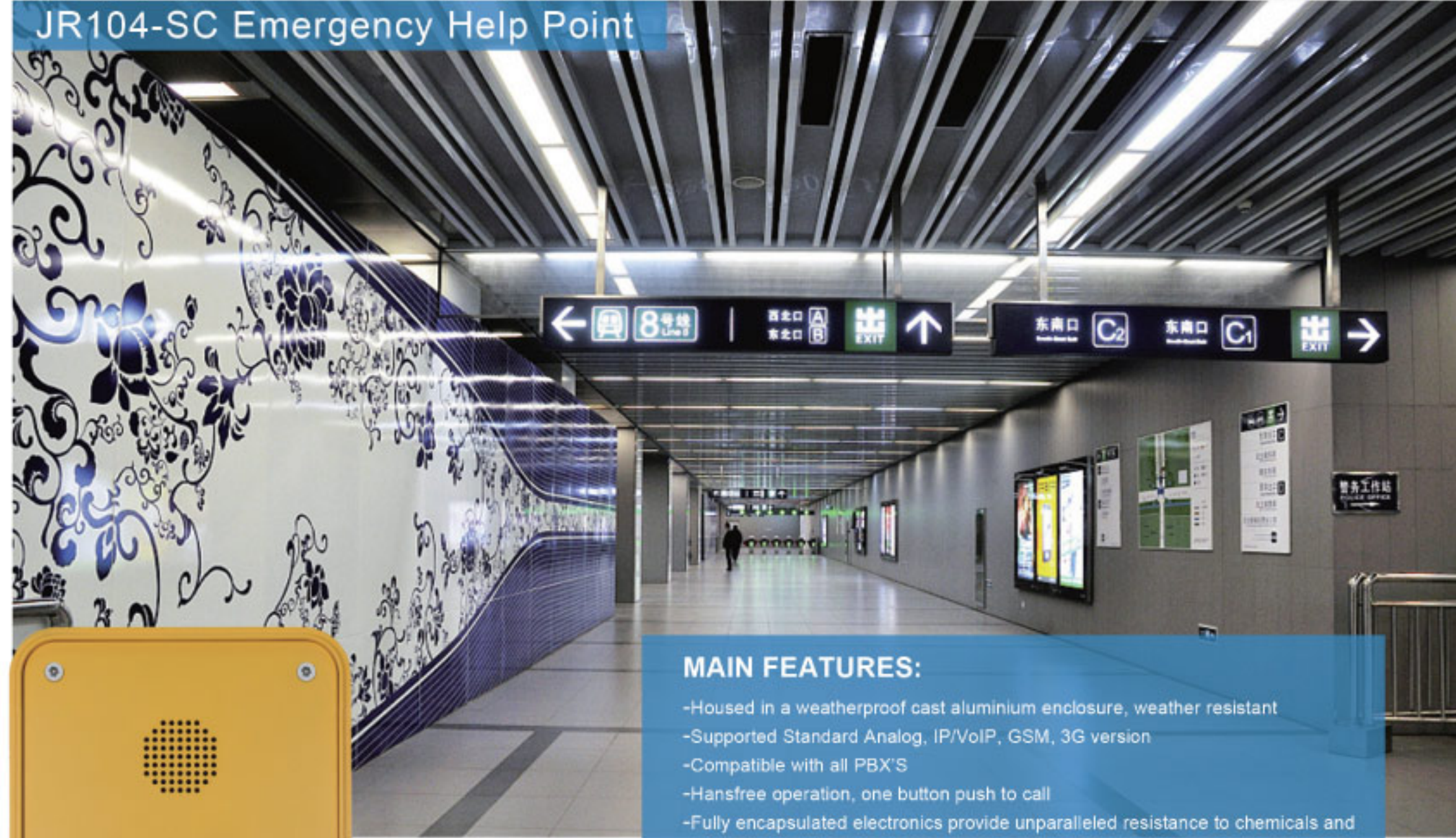
The phone is suitable for use in harsh environment characterized by: indoor & outdoor, Presence of dust & water ingress, Corrosive atmosphere, varying temperature, loud ambient noise, safety ect.



MAIN FEATURES:

- Housed in a weatherproof cast aluminium enclosure, weather resistant
- Enclosed Telephone with protection door against harm and dirt
- Supported Standard Analog, IP/VoIP, GSM, 3G version
- Compatible with all PBX'S
- Fully encapsulated electronics provide unparalleled resistance to chemicals and moisture in harsh environments
- SIP or H323 protocols, Fully configurable through any internet browser or the on-board display
- Completely programmable weatherproof keypad designed to be used with gloves
- No. of keys(TOTAL 15KEYS): 0-9, *, #, Flash, Mute, Last Number Redial
- Available in additional color options:Yellow, Blue, Red, Gray (RAL code)
- Very easy for operation,maintenance and management
- Telephone line powered/POE/DC powered based on different version
- Spiral or steel armoured handset cord with 20 years life span
- Adjustable handset holding clips secure the phone in marine applications and areas of high vibration
- Captive cover screws prevent loss during installation
- Call tone approx.90 dB(A)
- CE, (EMC, LVD), FCC, RoHS compliant
- Operating temperature -40°C to +70°C
- Dimensions in mm: H 339 / W 246 / D 126 (mm)

JR104-SC Emergency Help Point



MAIN FEATURES:

- Housed in a weatherproof cast aluminium enclosure, weather resistant
- Supported Standard Analog, IP/VoIP, GSM, 3G version
- Compatible with all PBX'S
- Handsfree operation, one button push to call
- Fully encapsulated electronics provide unparalleled resistance to chemicals and moisture in harsh environments
- SIP or H323 protocols, Fully configurable through any internet browser or the on-board display
- Line powered/POE/DC powered based on different version
- Available in additional color options: Yellow, Blue, Red, gray (RAL code)
- Very easy for operation, maintenance and management
- Captive cover screws prevent loss during installation
- Call tone approx. 90 dB(A)
- CE, (EMC, LVD), FCC, RoHS compliant
- Operating temperature -40°C to +70°C
- Dimensions in mm: W 334 / H 204 / D 109 (mm)

JR104-SC Help Point is a tough, weather resistant units, built to withstand abuse and environmental extremes. It is simple to install with fixings concealed from view giving increased security from vandalism. The help point offers a high level of vandal resistant with metal buttons and wall & flush mount design with no handset.

The Help Point can give a quick and easy link to emergency or information lines. It is fully electronic, weather and vandal resistant. It provides hands-free, loud-speaking communications for any quick area. Incoming calls are indicated by a flashing LED and audible tone. The help point backbox sold as seperate item.

JR104-2B Public Help Point



MAIN FEATURES:

- Housed in a weatherproof cast aluminium enclosure, weather resistant
- Supported Standard Analog, IP/VoIP, GSM, 3G version
- Compatible with all PBX'S
- Handsfree operation, 2 auto-dialler Buttons
- Fully encapsulated electronics provide unparalleled resistance to chemicals and moisture in harsh environments
- SIP or H323 protocols, Fully configurable through any internet browser or the on-board display
- Line powered/POE/DC powered based on different version
- Available in additional color options: Yellow, Blue, Red, Gray (RAL code)
- Captive cover screws prevent loss during installation
- Call tone approx. 90 dB(A)
- CE, (EMC, LVD), FCC, RoHS compliant
- Operating temperature -40°C to +70°C
- Dimensions in mm: H 334 / W 204 / D 109 (mm)

The Help Point is a rugged, public access hands-free telephone housed in a yellow enclosure. it offers a high level of vandal resistant with metal buttons and wall or flush mount design without handset.

It is finished in contrasting colours with a raised 32mm button. Raised text and Braille is included on a colour contrasted panel. Inductive loop is standard. 2 auto-dialler Buttons labelled "information" and "Emergency", 2 auto-dialler can be configured to dial two stored number or as a "hotline", where the exchange routes the call. It is fully electronic, weather and vandal resistant. It provides hands-free, loud-speaking communications for any quick area. Incoming calls are indicated by a flashing LED and audible tone. The help point backbox sold as seperate item.

JR105-FK Outdoor Telephone



JR105-FK is designed for voice communication in the hostile environment where reliability, efficiency and safety are of prime importance.

As a Outdoor Telephone, it is fully contained within a corrosion resistant cast aluminium weatherproof case to providing complete protection against dust and moisture ingress, resulting in a highly reliable product with a long MTBF.

The phone is suitable for use in harsh environment characterized by: indoor & outdoor, Presence of dust & water ingress. Corrosive atmosphere, varying temperature, loud ambient noise, safety ect.

MAIN FEATURES:

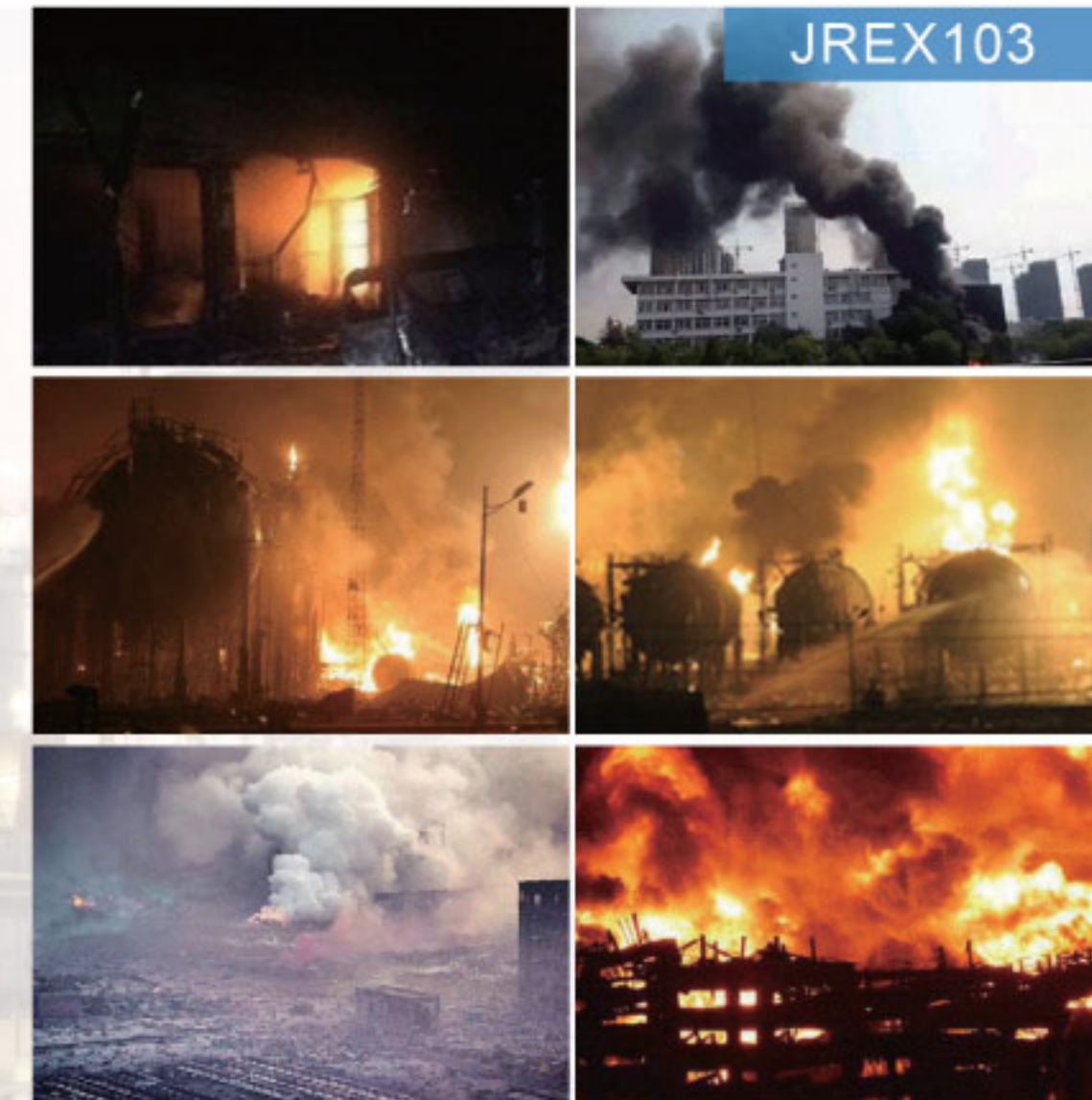
- Housed in a weatherproof cast aluminium enclosure, weather resistant
- Supported Standard Analog, IP/VoIP, GSM, 3G version
- Compatible with all PBX'S
- Fully encapsulated electronics provide unparalleled resistance to chemicals and moisture in harsh environments
- With LCD display show calling ID, Conversation time, Date, LOGO(Customized work available)
- SIP or H323 protocols, Fully configurable through any internet browser or the on-board display
- Line powered/POE/DC powered based on different version
- Completely programmable weatherproof keypad designed to be used with gloves
- No.of keys(TOTAL 15KEYS): 0-9, *, #, Flash, Mute, Last Number Redial
- Very easy for operation,maintenance and management
- Non-movable,magnetically operated hook switch
- Spiral or steel armoured handset cord with 20 years life span
- Adjustable handset holding clips secure the phone in marine applications and areas of high vibration
- Captive cover screws prevent loss during installation
- Call tone approx.90 dB(A)
- Available in additional color options:Yellow,Blue,Red,Gray (RAL code)
- Operating temperature -40°C to +70°C
- CE,(EMC,LVD), FCC, RoHS compliant
- Dimensions in mm: W 190 / H 293 / D 128 (mm)



JREX101 Explosion Proof Telephone



JREX103



This product has the following explosion protection:
 II 2G Rx e ib [ib] mb IIC T4 Gb
 III 2D Ex ib [ib] tb IIIC T135 °
 -40 °C ≤ Ta ≤ +60 °C/+40°C
 Zone 1, 2, 21, 22

Analog / IP VoIP Explosion Proof Telephone

The Explosion Proof Telephone is designed for voice communication in the hostile environment where reliability, efficiency and safety are of prime importance. The telephone can handle the large temperature differences found outdoors, high humidity, exposure to sea water and dust, Corrosive atmosphere, Explosive gases & particles, as well as mechanical wear and tear, making it perfect for use as an emergency telephone.

Key Features:

- Corrosion resistant aluminum alloy die casting housing, available in four colors, with NPT conduit entries and Type 3/IP67 environmental ratings
- Certificated for use in Hazardous areas of Gas Group IIB/IIA
- Zone classification: Zone 1, 2, 21 and 22
- Ex 'd' protected
- Intrinsically safe Ex"ib" certified
- Temperature classification: T4
- Compatible with all PBX'S
- Fully encapsulated electronics provide unparalleled resistance to chemicals and moisture in harsh environments



- Telephone line powered for Analogue Phone
- SIP or H323 protocols, Power supply: Power over Ethernet
- Fully configurable through any internet browser or the on-board display
- Handset with Noise canceling microphone, for effective communication from noisy areas(Armored SS cord stands up to rough treatment, optional for black curly cord)
- Completely programmable weatherproof keypad designed to be used with gloves
- No. of keys(TOTAL 15KEYS):0-9, *, #, Redial, Mute, Last Number Redial
- Hermetically sealed non-contact hook sensing switch improves system reliability
- Adjustable handset holding clips secure the phone in marine applications and areas of high vibration
- Built-in External Ringer that provides penetrating calling signal(85dbA@ 1meter)
- Mounting : Wall/column/structural
- Captive cover screws prevent loss during installation
- Dimension of the phone: Approx. 204*334*126 (mm)
- Weight of the phone: 7Kg.(Approx)



JREX101-CB Intrinsically Safe Telephone



JREX103-CB



Analog / VoIP Intrinsically Safe Telephone

The VoIP Explosion Proof Telephone is designed for voice communication in the hostile environment where reliability, efficiency and safety are of prime importance. The telephone can handle the large temperature differences found outdoors, high humidity, exposure to sea water and dust, Corrosive atmosphere, Explosive gases & particles, as well as mechanical wear and tear, making it perfect for use as an emergency telephone.

Key Features:

- Corrosion resistant aluminum alloy die casting housing, available in four colors, with NPT conduit entries and
- Type 3 / IP67 environmental ratings
- Certificated for use in Hazardous areas of Gas Group IIB/IIA
- Zone classification: Zone 1 & Zone 2
- Ex 'd' protected
- Intrinsically safe Ex "ib" certified
- Temperature classification:T4
- SIP or H323 protocols(Compatible with all PBX'S)
- Power supply: Power over Ethernet



Fully configurable through any internet browser or the on-board display

Handset with Noise canceling microphone, for effective communication from noisy areas(Armored SS cord stands up to rough treatment, optional for black curly cord)

Hotline Telephone(Automatic Dialer and No-Dial) without keypad

Hermetically sealed non-contact hook sensing switch improves system reliability

Built-in External Ringer that provides penetrating calling signal(85dbA@ 1meter)

Mounting : Wall/column/structural

Captive cover screws prevent loss during installation

Dimension of the phone: Approx. 204*334*126mm(W*H*D)

Weight of the phone: 7Kg.(Approx)

This product has the following explosion protection:

II 2G Ex e ib [ib] mb IIC T4 Gb

III 2D Ex ib [ib] tb IIIC T135 °

-40 °C ≤ Ta ≤ +60 °C/+40°C

Zone 1, 2, 22



JR200

Handset Telephone

The Handset Telephone is designed to meet the needs of client who experience loss through vandalism. Ideal for parking lots, prisons, railway/metro platforms, hospitals, police stations, ATM machines, stadiums, outside building etc.

Housed in cold rolled steel box and manufactured to a high standard, these telephones offer increased resistance to vandalism, and ensure that the primary function of communications is maintained at all times.

Extremely easy to install. The cable entrance is on the back of the phone to prevent from artificial damage, while the keypad is weather and vandal resistant. Powdercoat finish available in Red or Grey, durable and resistant to discolouration yet easily cleaned.



SIP

The world's unified converged communications standard protocol eliminates the need for compatibility and supplier selection.



Advanced protection classes:

strict compliance with high standards of international protection, waterproof to IP67, anti-impact to IK10



HD voice quality:

Wide band voice code G.722, making perfect acoustic enjoyment.



Full duplex speakerphone:

Latest Echo Cancel algorithm and professional echo cancellation Technology



Tamper resistant:

The front panel is matched with 304 stainless steel security screw.



Vandal resistant:

Robust enclosure to prevent malicious damage



PoE:

No need to connect external power supply, reducing wiring trouble



Operating Temperatures:

-40°C to +70°C, easy to adapt to the harsh environment





JR201-FK-VC

The Vandalproof Phone is a small, stainless steel telephone designed for use in locations where protection and durability are needed. This phone can be easily wall mounted without the need for a separate mounting device.

Applications:

- ✓ Emergency phone
- ✓ Courtesy phone
- ✓ Inmate phone
- ✓ Security phone
- ✓ Employee phone
- ✓ Hot line phone (requires dialer)



FEATURES

- Easily wall mountable on its own or can be mounted to a Payphone backplate or similar device.
- Heavy-duty armored handset is hearing aid compatible (HAC) and has an anti-static receiver
- Armored cord is made to Bell Core standards and withstands minimum 800 lb pulling test
- Works with any standard telephone line
- Can be used on most PBX systems as an extension phone
- Calling card service compatible
- Works with most auto-dialers and call restrictors
- Made of durable 14-gauge stainless steel
- Tamper resistant locking system
- Armored modular hook switch lever
- Armored modular keypad with metal buttons and bezel that is water, fire and shock resistant
- Built in volume control button
- Built in ringer can be left on or turned off.
- Noise-Canceling Microphone option is recommended for loud environments.
- Size: 247 *130 *132(mm)

Technical Specification

Technical Specification	
Analogue Version	
Power Supply	Telephone Line Powered
Supply Voltage	24 VDC to 65 VDC
Supply Current	20 mA DC to 100 mA DC
Ringer Volume	- 80dB(A) at 1m distance
Dialing Method	DTMF mode in accordance with ITU-T recommendation Q.23.
SIP Version	
Power Supply	PoE or 12V DC
Power Consumption	-Idle:1.5W -Active:1.8W
SIP Protocol	SIP 2.0 (RFC3261)
Support Codec	G.711 A/U, G.722 8000/16000, G.723, G.729
Communication	Type Full duplex
Ringer volume	90-95dB(A) at 1m distance
Ambient conditions	
Protection type	IP65 as per EN60529
Operating temperature	-40°C to +70°C
Storage temperature	-40°C to +70°C

JR202-CB



Strong and compact small cold-rolled steel surface mount wall telephone for ring-down operation.
The telephone will accept incoming calls and relies on external equipment to control calling.

FEATURES

- Armored Handset Wall Phone With Reinforced Armored Cord
- Metal Cradle Hook for Extra Protection
- Lift Handset and phone Automatically Dials 911 (Pre-Programmed)
- Accepts Call Back With Audible Ringer
- Telephone line powered/POE/DC powered based on different version
- Can be used on most PBX systems as an extension phone
- Recommended for Indoor Use
- This phone can be easily wall mounted without the need for a separate mounting device.
- Bespoke solutions
- Size: 240 *100 *112(mm)



JR204-FK



FEATURES

- Can be used on most PBX systems as an extension phone
- Calling card service compatible
- Armored modular hook switch lever
- Armored modular keypad with metal buttons and bezel that is water, fire and shock resistant
- Heavy-duty armored handset is hearing aid compatible (HAC) and has an anti-static receiver
- Armored cord is made to Bell Core standards and withstands minimum 800 lb pulling test
- LCD display
- Built in ringer can be left on or turned off.
- Noise-Canceling Microphone option is recommended for loud environments.
- This phone can be easily surface mounted without the need for a separate mounting device.
- Tamper resistant screw
- Bespoke solutions
- Size:250 *160 *123 (mm)

JR208-CB



JR212-FK



Strong and compact brushed stainless steel flush mounted telephone for ring-down operation. The telephone will accept incoming calls and relies on external equipment to control calling.

FEATURES

- Can be used on most PBX systems as an extension phone
- Lift Handset and phone Automatically Dials 911 (Pre-Programmed)
- Accepts Call Back With Audible Ringer
- Telephone line powered/POE/DC powered based on different version
- Constructed of durable 14 gauge stainless steel
- Armored Handset With Reinforced Armored Cord
- Internal lanyard inside the armored cord sheath
- Handset cord retaining bracket is designed for fast,easy handset changes
- Stainless grommet provides added security for handset cord(Adjustable handset cord lengths)
- Metal Magnetic Cradle Hook for Extra Protection
- Tamper Resistant and Low Maintenance
- Mounts directly the the wall
- Bespoke solutions
- Recommended for Indoor Use
- Size: 280 *190 *124 (mm)



FEATURES

- Can be used on most PBX systems as an extension phone
- Calling card service compatible
- Constructed of durable 14 gauge stainless steel
- Armored modular hook switch lever
- Armored modular keypad with metal buttons and bezel that is water, fire and shock resistant
- Heavy-duty armored handset is hearing aid compatible (HAC) and has an anti-static receiver
- Armored cord is made to Bell Core standards and withstands minimum 800 lb pulling test
- Illuminated LCD display
- Built in ringer can be left on or turned off.
- Noise-Canceling Microphone option is recommended for loud environments.
- This phone can be easily surface mounted without the need for a separate mounting device.
- Tamper resistant and Low Maintenance
- Built in volume control button
- Dust and waterproof to IP65
- Bespoke solutions
- Size:283 *136 *132 (mm)





Vandal Resistant Desk Phone. The phone will come standard with armored keypads, armored cradles, and armored handset cords. Ideal for the centre of Transport (roadside, railway stations, airports) Power Production and Utilities Commercial (Stadiums, Banking, retail), Manufacturing and construction, Educational & Government facilities or any location in which extra security is needed.

FEATURES

- Compatible W/PBX, Centrex, etc.
- Constructed of durable 14 gauge stainless steel
- Armored Handset Desk Phone With Reinforced Armored Cord
- Internal lanyard inside the armored cord sheath
- Handset cord retaining bracket is designed for fast, easy handset changes
- Stainless grommet provides added security for handset cord
- Metal Magnetic Cradle Hook for Extra Protection
- Built in ringer can be left on or turned off.
- Tamper Resistant and Low Maintenance
- Bespoke solutions
- Dust and waterproof to IP65
- Size: 300 *150 *160 (mm)



JR300

Emergency Telephones



SIP

The world's unified converged communications standard protocol eliminates the need for compatibility and supplier selection.



Advanced protection classes:

strict compliance with high standards of international protection, waterproof to IP67, anti-impact to IK10



HD voice quality:

Wide band voice code G.722, making perfect acoustic enjoyment.



Full duplex speakerphone:

Latest Echo Cancel algorithm and professional echo cancellation Technology



Tamper resistant:

The front panel is matched with 304 stainless steel security screw.



Vandal resistant:

Robust enclosure to prevent malicious damage



PoE:

No need to connect external power supply, reducing wiring trouble



Operating Temperatures:

-40℃ to +70℃, easy to adapt to the harsh environment

The Emergency Telephones are based on a stainless steel faceplate and provide a clear handsfree, loud-speaking operation for any public area.

Manufactured to a high standard, these telephones offer increased resistance to vandalism, and ensure that the primary function of communications is maintained at all times.

The Emergency Telephones has been designed to meet the needs of clients who experience loss through vandalism. However, the telephone is extremely simple to install and offers a convenient solution to a range of telephone siting problems. Ideal for prisons, court houses, rail platforms, car-parks, police stations, hospitals, outside buildings, gate entry, etc.





Rugged stainless steel wall mount handsfree, speakerphone with a stainless steel push button for dial tone. The Phone offers anti-vandal reliable, communication for Commercial building, jails, schools, hospitals and facilities that require handsfree, durable and clear communication.

FEATURES

- Programmable for speed-dialing (PPT)
- When called party hangs up the phone resets itself.
- Equipped with weatherproof, puncture resistant speaker and microphone
- Can be programmed remotely by tone phone
- Fast-fit terminal connection
- Easy install surface mounted or flush mounted
- Weather protection IP54-IP65
- Bespoke solutions
- Unit size: 210*140*50 (mm)

Analogue Version

Power Supply	Telephone Line Powered
Supply Voltage	24 VDC to 65 VDC
Supply Current	20 mA DC to 100 mA DC
Communication Type	Full duplex
Ringer Volume	80dB(A) at 1m distance
Dialing Method	DTMF mode in accordance with ITU-T recommendation Q.23.

SIP Version

Power Supply	PoE or 12V DC
Power Consumption	Idle: 1.5W -Active: 1.8W
SIP Protocol	SIP 2.0 (RFC3261)
Support Codec	G.711 A/U, G.722 8000/16000, G.723, G.729
Communication Type	Full duplex
Ringer volume	90~95dB(A) at 1m distance

3G Version

Power Supply	12V DC
Power Consumption	Idle: 0.3W -Active: 1.5W
Communication Type	Full duplex
Ringer volume	90~95dB(A) at 1m distance
Program Method	Remote programming by SMS



FEATURES

- Stainless-Steel plate, Weatherproof.
- Vandal resistant design
- Fully integrated antenna option
- During preset hours call another phone number
- Fast set up by text message
- To hold or release by SMS or call.
- Calls landline or mobile numbers
- Unlimited range wire free GSM intercom using GSM module.
- Answer the visitor's call no matter where you are.
- Relay outputs to control most door locks and gate automation systems.
- Suitable for both surface/Pillar mounted installation.
- Suitable for all weather applications
- Bespoke solutions
- Unit size: 230*160*80 (mm)

Technical Specifications

3G Version

Power Supply	12V DC
Power Consumption	-Idle: 0.3W -Active: 1.5W
Communication Type	Full duplex
Ringer volume	90~95dB(A) at 1m distance
Program Method	Remote programming by SMS



JR306-SC



FEATURES

Hands Free Emergency Call Box
 Remote programmable
 Push Button to operate, One or two button options
 Auto Answer
 Supported Standard Analog, IP/VoIP, GSM, 3G version
 Constructed in robust steel, Vandal and mark resistant
 Equipped with weatherproof, puncture resistant speaker and microphone
 Speech optimisation in noisy environments
 Call timeout and remote hang up
 Robust and weather resistant: IP65
 Easy install surface mounted or pillar mounted
 Bespoke solutions
 Unit size: 300*180*120 (mm)

Analogue Version

Power Supply	Telephone Line Powered
Supply Voltage	24 VDC to 65 VDC
Supply Current	20 mA DC to 100 mA DC
Communication Type	Full duplex
Ringer Volume	80dB(A) at 1m distance
Dialing Method	DTMF mode in accordance with ITU-T recommendation Q.23.

SIP Version

Power Supply	PoE or 12V DC
Power Consumption	Idle: 1.5W -Active: 1.8W
SIP Protocol	SIP 2.0 (RFC3261)
Support Codec	G.711 A/U, G.722 8000/16000, G.723, G.729
Communication Type	Full duplex
Ringer volume	90~95dB(A) at 1m distance

3G Version

Power Supply	12V DC
Power Consumption	Idle: 0.3W -Active: 1.5W
Communication Type	Full duplex
Ringer volume	90~95dB(A) at 1m distance
Program Method	Remote programming by SMS



JR308-FK



FEATURES

Hands Free Emergency Intercom
 Constructed in robust steel, Vandal and mark resistant
 Can be used on most PBX systems as an extension phone
 Phone is with marine quality chrome tone dial keypad, weatherproof, puncture resistant speaker and microphone
 Telephone can not be left offhook, as it detects when called party hangs up and resets itself
 Speech optimisation in noisy environments
 Diecast zinc alloy keypad with non-wearing engrave and fill legends
 Robust and weather resistant: IP65
 Easy install surface mounted
 Bespoke solutions
 Unit size: 210*140*50 (mm)

Analogue Version

Power Supply	Telephone Line Powered
Supply Voltage	24 VDC to 65 VDC
Supply Current	20 mA DC to 100 mA DC
Communication Type	Full duplex
Ringer Volume	80dB(A) at 1m distance
Dialing Method	DTMF mode in accordance with ITU-T recommendation Q.23.

SIP Version

Power Supply	PoE or 12V DC
Power Consumption	Idle: 1.5W -Active: 1.8W
SIP Protocol	SIP 2.0 (RFC3261)
Support Codec	G.711 A/U, G.722 8000/16000, G.723, G.729
Communication Type	Full duplex
Ringer volume	90~95dB(A) at 1m distance

3G Version

Power Supply	12V DC
Power Consumption	Idle: 0.3W -Active: 1.5W
Communication Type	Full duplex
Ringer volume	90~95dB(A) at 1m distance
Program Method	Remote programming by SMS





JR313-2B

The Help Point telephones are vandal and weather resistant, providing hands-free loudspeaking communications for any public area. The internal components are protected by a weather resistant enclosure behind the faceplate. It is finished in contrasting colours with a raised 32mm button. inductive loop is standard. 2 button auto-dialer

Hands Free Weather Resistant Telephone

Constructed in robust steel, Vandal and mark resistant

Two buttons

Can be used on most PBX system as an extension phone

Voice-switched (VOX) semi-duplex or full-duplex operation

Tone dialling (DTMF)

Audio-visual ring indication

Equipped with weatherproof, puncture resistant speaker and microphone

Speech optimisation in noisy environments

Call timeout and remote hang up

Robust and weather resistant: IP65

Unit size: 200*140*50 (mm)



Technical Specifications

Analogue Version

Power Supply	Telephone Line Powered
Supply Voltage	24 VDC to 65 VDC
Supply Current	20 mA DC to 100 mA DC
Communication Type	Full duplex
Ringer Volume	80dB(A) at 1m distance
Dialing Method	DTMF mode in accordance with ITU-T recommendation Q.23.

SIP Version

Power Supply	PoE or 12V DC
Power Consumption	Idle: 1.5W - Active: 1.8W
SIP Protocol	SIP 2.0 (RFC3261)
Support Codec	G.711 A/U, G.722 8000/16000, G.723, G.729
Communication Type	Full duplex
Ringer volume	90~95dB(A) at 1m distance

3G Version

Power Supply	12V DC
Power Consumption	Idle: 0.3W - Active: 1.5W
Communication Type	Full duplex
Ringer volume	90~95dB(A) at 1m distance
Program Method	Remote programming by SMS





Our most popular and cost effective wall-mounted emergency help point units are rugged and reliable solutions highlighted by brushed stainless or painted steel construction, LED Beacon/Strobe lights and CE, FCC, RoHS compliance

FEATURES

- Emergency phones for public areas.
- Security/Help telephone for parking structures.
- "Area of rescue" telephone for high-rise buildings needing ADA compliance.
- Low profile case
- Full duplex communication
- Camera ready relay
- Equipped with weatherproof, puncture resistant speaker and microphone
- Remotely programmable from any touch-tone telephone
- Emergency Phone faceplate is illuminated at all times for clear visibility during the night
- ADA "Call Progress" lamp mounted inside the weatheproof housing
- Tamper resistant cabinet security screws
- Designed to resist extreme weather conditions
- A variety of signage, graphics and color choices are available
- Unit Size:300*220*800 (mm)



The Tower is an excellent choice for walkways, trails, parks, open landscape areas, college campuses, parking facilities, shopping malls, healthcare facilities and corporate campuses. At 95ft tall, Towers are a crime deterrent, create a sense of security and serve as an emergency communication system. Wireless communication and solar power allow the Tower to be installed almost anywhere. The Solar Tower is environmentally friendly and a proven, self sustaining, green technology. Communication Options: Landline, Cellular, VoIP.

FEATURES

- Calls up to 4 phone numbers
- Remote or on-site programmable
- Blue beacon/strobe with photocell
- Recessed illuminated faceplate
- Call assurance LED
- Blue strobe
- White powder coating with blue lettering
- 11 gauge steel
- ADA compliant
- 2 year warranty
- Tamper resistant cabinet security screws
- Designed to resist extreme weather conditions
- EMERGENCY reflective label color options
- Custom lettering
- Unit Size: 300*250*2600



This housing lets an emergency road call treatment. It manages communications between a distress user and an authorized operator of the motorway operating department. Exchanges are done via GSM networks. Solar system configuration options
Constructed out of durable stainless steel. Coating designed to resist extreme weather conditions

FEATURES

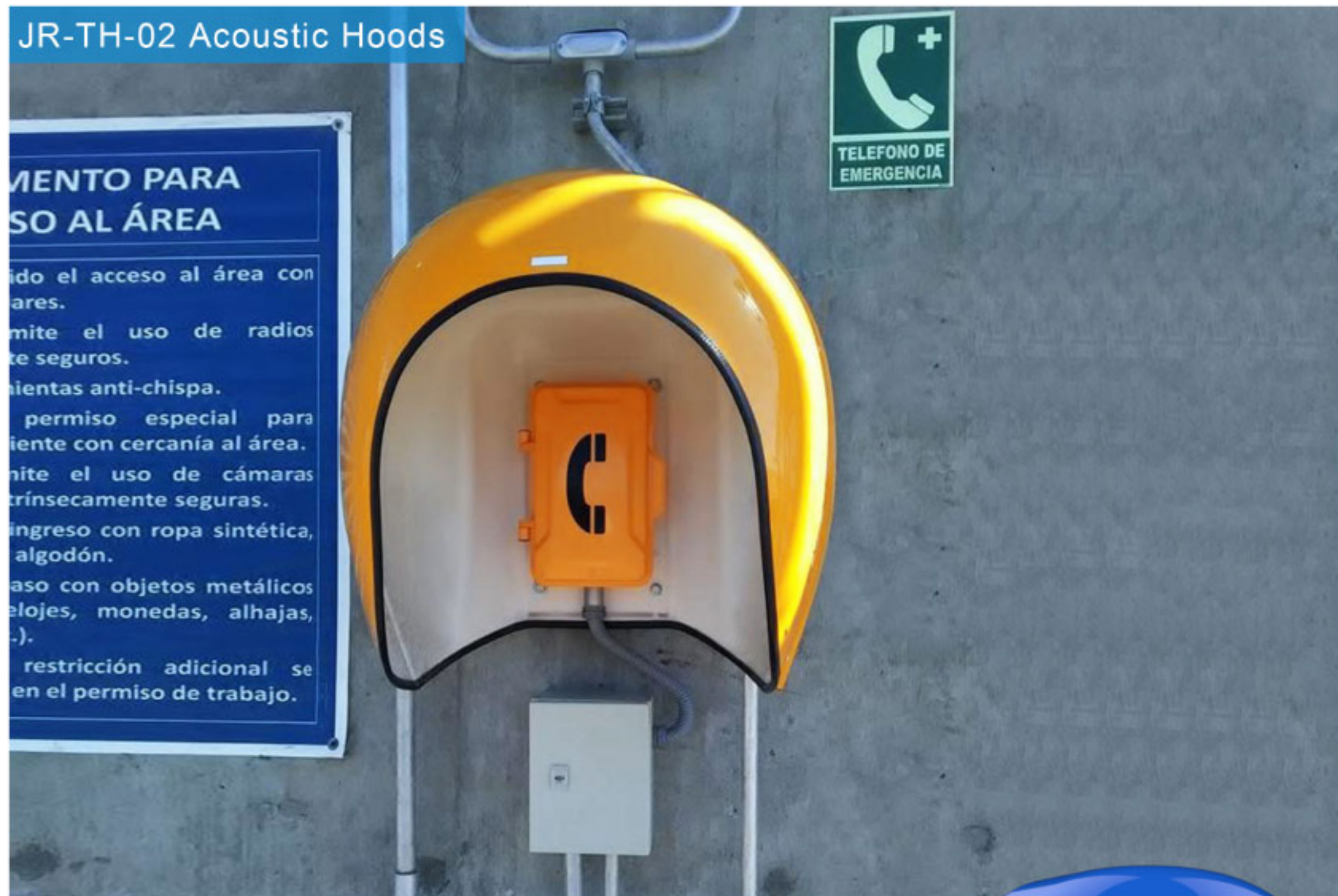
- Warning by simple pressing the call button, Two way communication.
- Caller's geographical localization
- SMS programming
- Full duplex communication with the operator
- Autonomous power supply by solar panel
- Hearing impaired user assistance
- The installation is easy and needs a light civil engineering built
- User Friendly
- Unit Size: 436*306*2400

Applications:

- On National Highway (SOS)
- With Any Emergency System
- GSM GPS Application
- Auto Network Search
- Customize Features



JR-TH-02 Acoustic Hoods



FEATURES

Excellent ambient noise rejection-Intelligible communications in noisy environment
 Rot Proof construction-Minimal maintenance, long service life
 Highly visible coloured gel coating-Rapid location in an emergency
 Colour: Bright Orange, White, Blue, Yellow, Red
 Lightweight-Simple installation
 Temp Range:-50°C to +70°C
 Humidity:100%
 Noise Atenuation:15dB
 Apparatus plate -304 Grade Stainless Steel, 2mm thickness
 Mounting Brackets-Galvanised Steel, 6mm thickness
 Max Load:40kg
 Weight-Approx 26Kg
 Dimensions - H800 W690 D480 (mm)



JR-TH-01 Acoustic Hoods



Corrosion proof construction and quality build ensure performance in applications including Offshore installations, Refineries, Chemical plants and any industrial site where ambient noise inhibits efficient two way voice communications.

The excellent acoustic performance is achieved through the integration of a specialist acoustic barrier, integrated into the inner shell during manufacture, the acoustic lining is tough, non-hygroscopic, resistant to oils, chemicals and salt water. For external or internal use, the JR-TH-01 is designed to attain a high level of noise reduction up to 23.5dB.

FEATURES

Excellent ambient noise rejection-Intelligible communications in noisy environment
 Rot Proof construction-Minimal maintenance, long service life
 Highly visible coloured gel coating-Rapid location in an emergency
 Colour: Bright Orange, Blue, Yellow, Red ect
 Temp Range : -50°C to +70°C
 Humidity:100%
 Noise Atenuation:23.5dB
 Apparatus plate -304 Grade Stainless Steel, 2mm thickness
 Mounting Brackets-Galvanised Steel, 6mm thickness
 Max Load:40kg
 Weight-Approx : 28.5Kg
 Dimensions : H780 W680 D500 (mm)





JR-TH-03 Acoustic Hoods

The Outdoor Metal Booth is the familiar, high quality, industrial payphone enclosure. This unit is an all new constructed booth based on the original Western Electric version.

It includes tempered glass, high quality steel frame, durable powder-coated paint, robust steel shelf and a solid galvanized plate floor.

The JR-TH-03 is perfect for a payphone, courtesy phone, industrial phone or kiosk application. It also offers great privacy for cell phone users.

Main characteristics

- Designed for use in noisy areas and harsh environments
- Extremely robust
- Good acoustic qualities and highly visible
- Non-hygroscopic acoustic insulation
- Familiar Appearance attracts customers
- Can be installed indoors or outdoors
- Protects user and phone against weather elements
- Includes quality led light inside the booth
- Includes solid galvanized plate floor
- Offers maximum privacy when optional Door is added
- Noise reduction level: 38db
- Unit Size :1100*1100*2400 (mm)
- Custom decal logos available
- Weight : 650 lbs





Telephone Management Application

Introduction

The J&R's Telephone Management Application(TMA) is used to monitor the activity and health of J&R Analogue Telephones product. The reports and information provided by TMA can proven useful in reducing maintenance labor costs and greatly reduce liabilities typically associated with an emergency communication system.

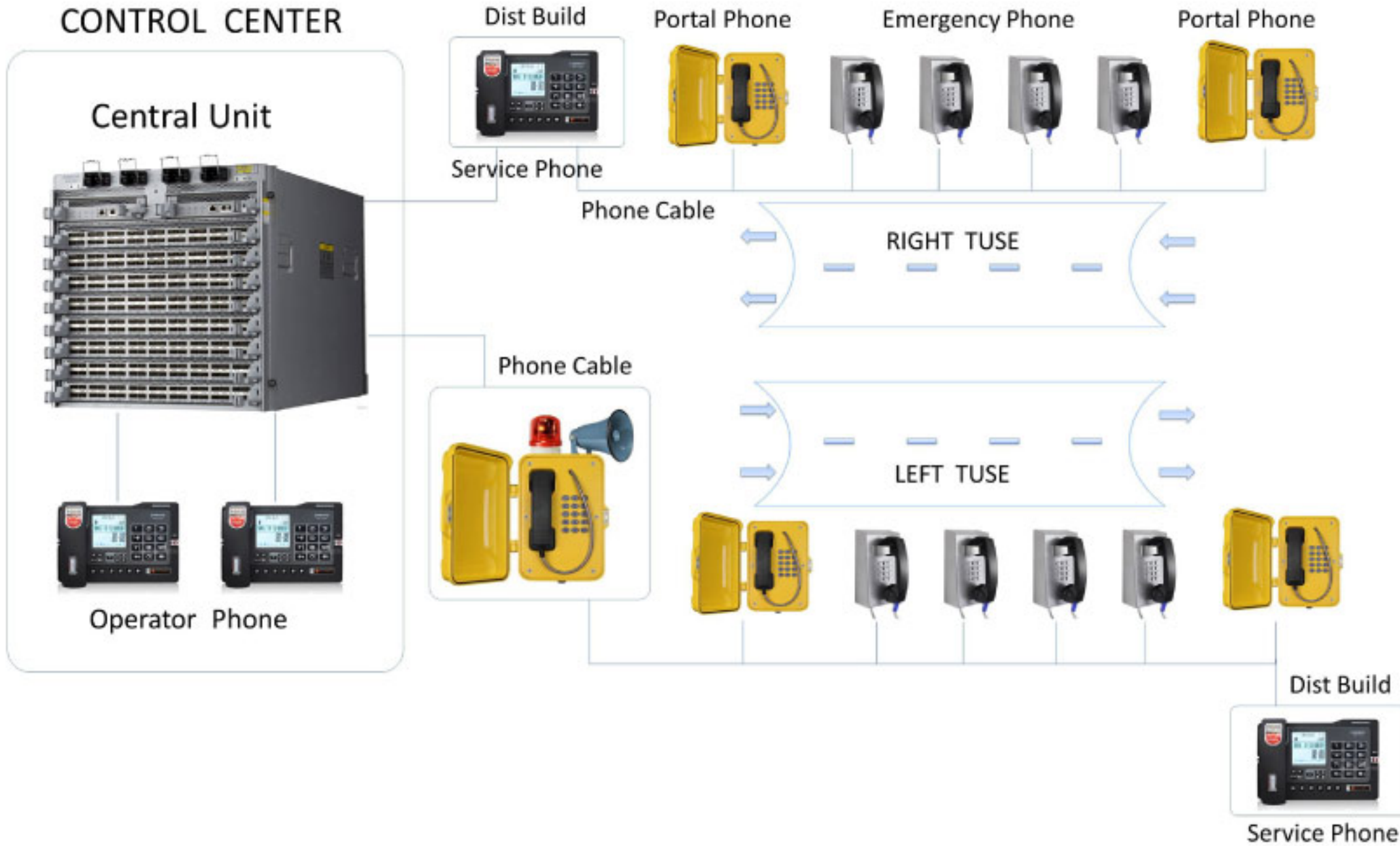
TMA runs continuously on a dedicated personal computer by using one(or more) telephone line compatible modems or a Local Area Network LAN to gather status information from each telephone at regular intervals.

In addition,the System Manager uses TMA to remotely adjust the behavior of individual telephones.These updates are either sent to the phone immediately

or are held to be sent during the next scheduled health-check maintenance call.

TMA provides an at-a-glance view of the status of the telephones as well as customizable reporting in the form of scheduled printed reports,and reports generated on demand.

J&R Tunnel Emergency Telephone System





COOPERATION PARTNER ▼



ALSTOM				
ZLOTY ZLOTY HOLDINGS SDN BHD	GR საქართველოს რკინიგზა	SAIT SAIT INFORMATION IS CRITICAL	Telefin TELECOMUNICACIONES FINANCIERAS	ird
ABB	Kiosk Bulgaria			Honeywell THE POWER OF CONNECTED
NEC Orchestrating a brighter world	NetworkRail		SNCF	MTR caring for life's journeys
edf ENERGY		TIM il futuro firmato Telecom Italia	telecom	IPMATIKA
PCCW	THALES			BECHTEL
KCPG				
hecker				
	SIEMENS	zeta	EATON	
MST		ELCOME	AVAYA	DSU DIXIE STATE UNIVERSITY

TELEPHONE ACCESSORIES ▼



JR-HS-01C

JR-HS-01S

JR-HS-02

JR-HS-03

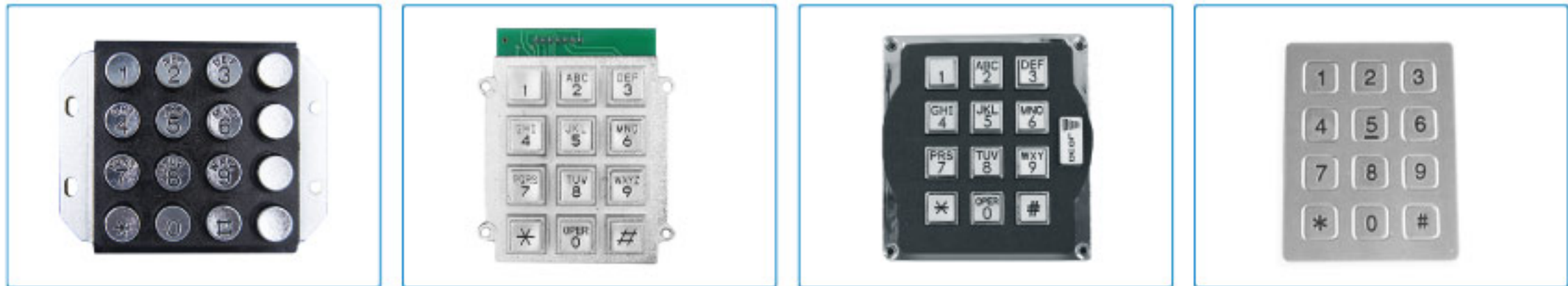


JR-HK-01

JR-HK-02

JR-HK-03

JR-HK-04

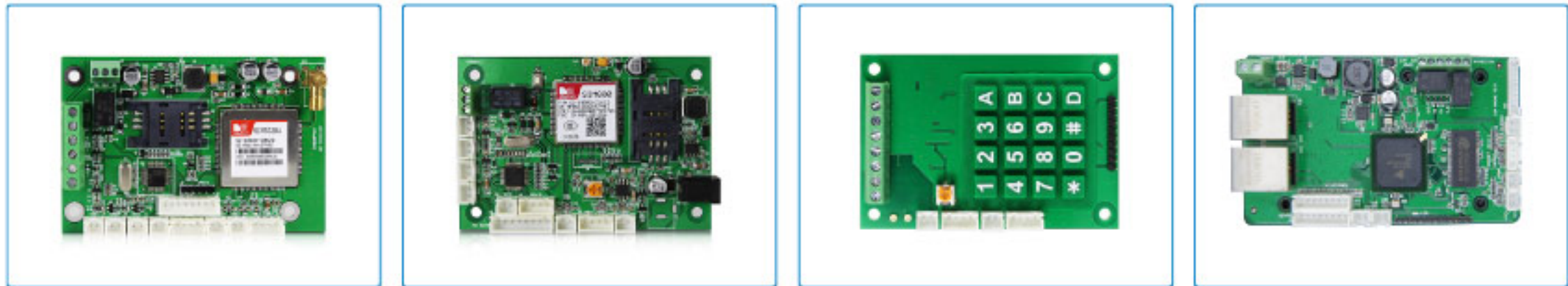


JR-KP-01

JR-KP-02

JR-KP-03

JR-KP-08



3G

GSM

Analog

SIP



JR-LP-01

JR-LP-02

JR-LP-03

JR-LP-04



JR-SP-01

JR-LB-01

JR-SP-02

JR-BOX



JR-KITS-02

JR-KITS-03

JR-KITS-04

JR-KITS-05



JR-TP-01

JR-TP-02

JR-TP-03

JR-TP-04